



# Joint Base Anacostia-Bolling Vapor Intrusion Fact Sheet



## About Joint Base Anacostia-Bolling

*A Legacy of Service and Community Engagement*

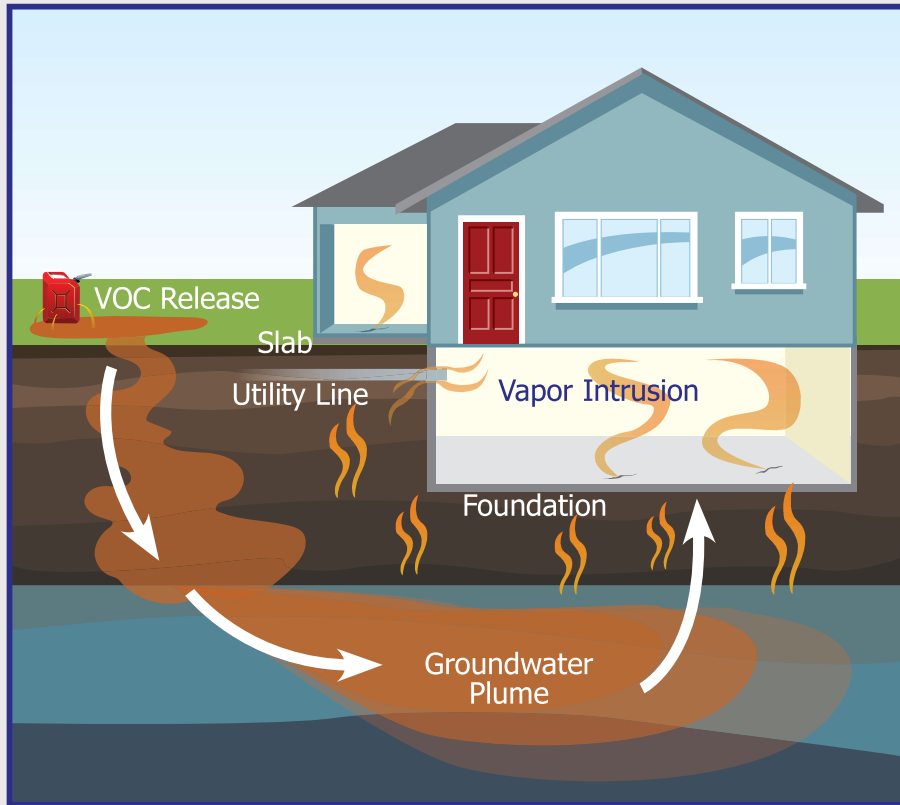
◀ Learn more about JBAB history

Home to the 11th Wing and approximately 70 mission partners, Joint Base Anacostia-Bolling has played a vital role in coordinating a range of operational, administrative, and ceremonial activities across the National Capital Region. The base hosts over 17,000 personnel and remains the historic base for the U.S. Air Force Band and Honor Guard.



## What is Vapor Intrusion (VI)?

*Protecting Your Indoor Air Quality*



Vapor Intrusion occurs when volatile chemicals from contaminated soil or groundwater migrate into buildings. Common sources of these chemicals include:

**BTEX (Benzene, Toluene, Ethylbenzene, Xylene)**

Found in fuels.

**Chlorinated Solvents**

Used in industrial and dry-cleaning processes.

**Jet Fuel**

From historic underground pipelines.

JBAB is conducting comprehensive sampling of groundwater, soil gas, and indoor air to identify potential VI pathways.



*What is Vapor Intrusion? EPA Info. ▶*

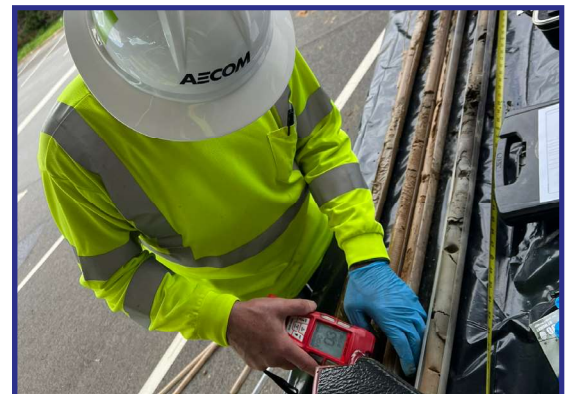
## Why Investigate Now?

*Proactive Monitoring and Updated Standards*

**Longstanding Monitoring:** Groundwater sampling at JBAB housing has occurred annually since the 1980s.

**Recent Changes:** Updates to VI screening levels and a slight increase in contamination concentrations require further investigation.

**Abundance of Caution:** Despite prior studies showing minimal exposure risk, additional steps are being taken to ensure safety.





# Sampling Plans

## Timeline of Work Ahead

◀ Sampling Details and Sub-Slab Methods.



A systematic sampling approach is essential to accurately assess VI risks. The sampling plan at JBAB includes multiple phases that follow EPA guidelines to ensure thorough evaluation.

### How Will Sampling Be Conducted?

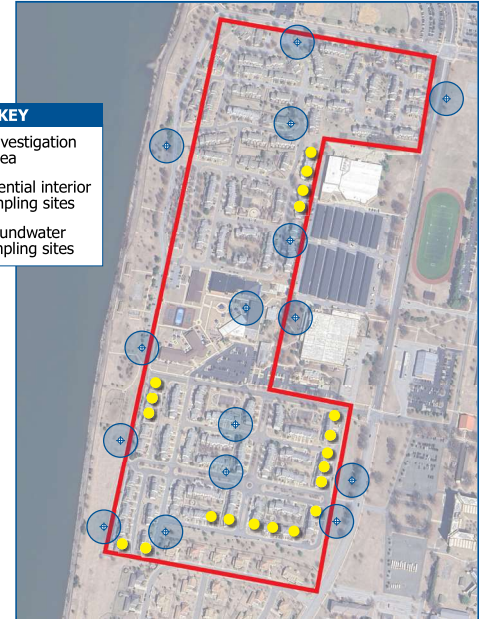
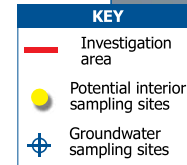
- 1. Groundwater Sampling:** Initial step to refine locations for indoor sampling.
- 2. Interior Sub-Slab Sampling:** Small air canisters collect sub-slab air samples through minimally invasive drilling. Scheduled during the heating season to ensure accurate results.

**Completed-May 2024:** First round of initial groundwater sampling.

**Completed-August 2024:** Second round of initial groundwater sampling.

**Summer/Fall 2025:** Indoor air sampling at up to 20 garages on Chandler Street SW, Randolph Way SW and Langley Way SW.

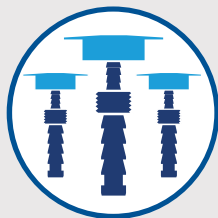
**Fall/Winter 2025:** Second round of interior sampling in the same garages.



## What Happens Next?

After VI sampling is completed, the collected data will be carefully analyzed and shared with residents

### DATA ANALYSIS AND REPORTING



Expected completion of initial sampling:  
*Late Summer 2025*



Expected completion of data analysis:  
*Spring 2026*



Expected release of final report: *Late Summer 2026*.  
Follow-up community outreach to relay findings.

Risk is present



AF expands sampling plan, develops cleanup plan and notifies residents.

No risk is present



**NO ACTION IS REQUIRED**



#### What If Data is Incomplete?

If more data is needed then additional housing investigation may be scheduled for 2027.

## What Can You Do?

*Stay Informed and Get Involved*

### Stay Informed



**JBAB's Environmental Webpage**

### Participate in Sampling

**Provide Access:** Allow sampling teams to collect air samples from your residence if selected.

**Share Feedback:** Communicate any concerns or observations to the project team.

### Health Precautions

**Ventilation:** Ensure proper ventilation in your home to reduce potential indoor air contaminants.

**Household Products:** Be aware that some household products can emit VOCs.